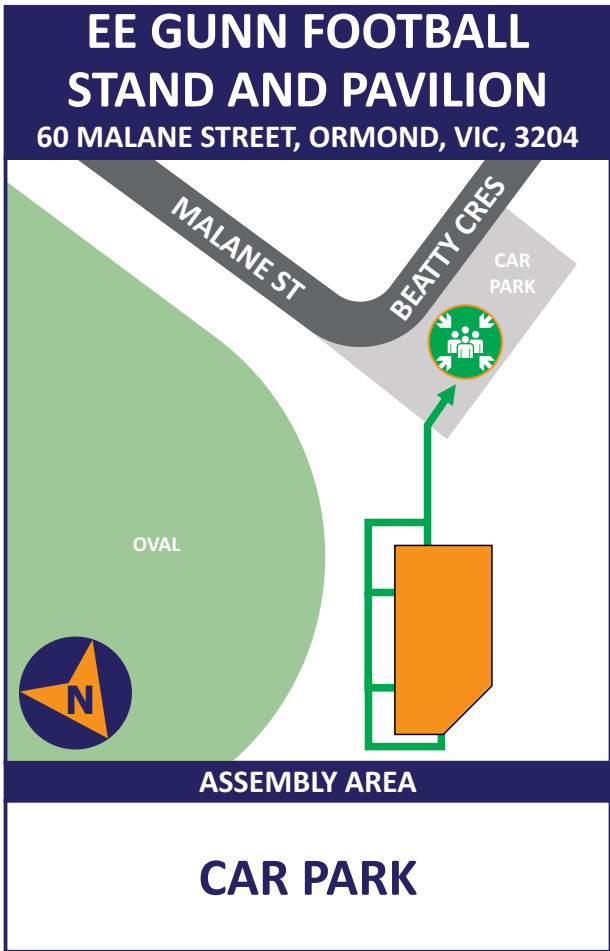


EVACUATION DIAGRAM



IN CASE OF FIRE (ATTEMPT ONLY IF SAFE TO DO SO)

R REMOVE ANY PERSON/S FROM IMMEDIATE DANGER. STAY LOW	P PULL THE PIN, BREAK THE SEAL AND TEST
A ALERT RAISE THE ALARM. DIAL 000 FOR EMERGENCY SERVICES	A AIM AT THE BASE OF THE FIRE/FLAMES
C CONTAIN CLOSE DOORS & WINDOWS TO CONFINE SMOKE/FIRE	S SQUEEZE THE OPERATING HANDLE (TRIGGER)
E EXTINGUISH/EVACUATE ATTEMPT TO EXTINGUISH THE FIRE (REMEMBER PASS)	S SWEEP THE CONTENTS FROM SIDE-TO-SIDE

FOR FIRE EXTINGUISHERS, REMEMBER:

IF YOUR SAFETY IS AT RISK, EVACUATE

EMERGENCY SERVICES

DIAL 000

POLICE
 FIRE
 AMBULANCE

EVACUATION PROCEDURES

REMOVE FROM IMMEDIATE DANGER

- If an emergency incident occurs, move a safe distance away from the danger.
- Prevent others from entering the area and alert surrounding people.
- If safe and trained to do so, attempt to extinguish the fire/contain the emergency incident.
- Continually assess the situation and do not put yourself or others at risk.

NOTIFY EMERGENCY SERVICES

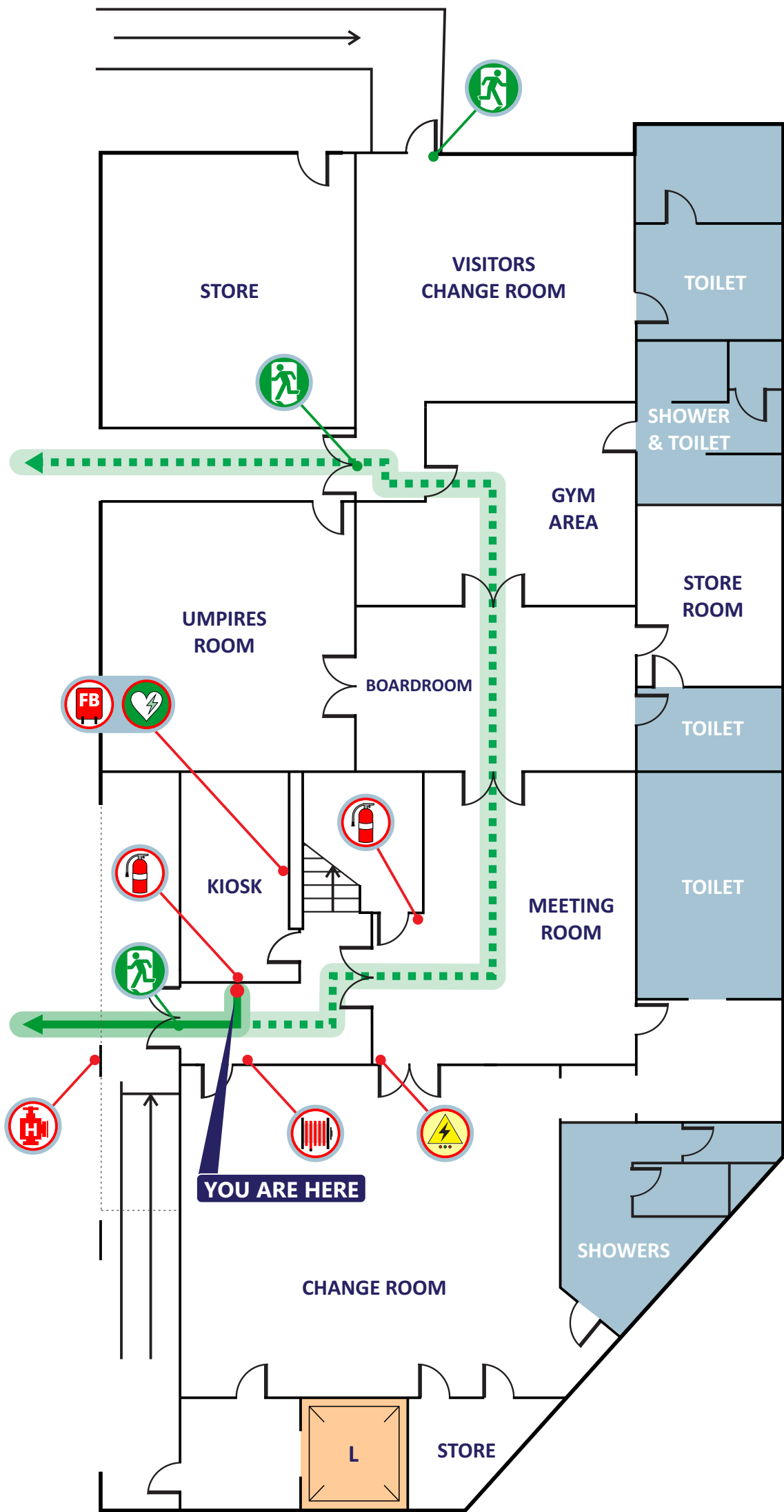
- Dial 000

EVACUATE THE BUILDING

- In the event of the smoke, fire or emergency incident worsening, EVACUATE immediately, via the nearest safe exit.
- When the area has been evacuated, all doors and windows should be closed to contain the smoke/fire. Do not obstruct access to Exits.

PROCEED TO THE ASSEMBLY AREA

- Refer to Site Plan and await instructions from the responding Emergency Services.

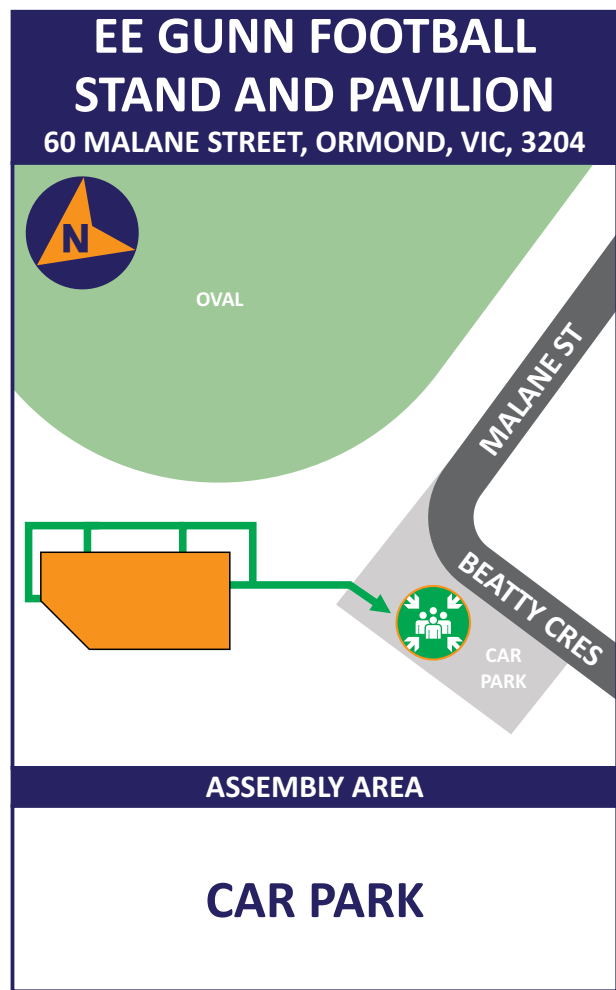


LEGEND

Fire Extinguisher Dry Chemical Powder	Fire Hose Reel	Fire Blanket	Hydrant	Switchboard	Defibrillator	Exit	Primary Evacuation Route	Secondary Evacuation Route
--	----------------	--------------	---------	-------------	---------------	------	--------------------------	----------------------------



EVACUATION DIAGRAM



EVACUATION PROCEDURES

REMOVE FROM IMMEDIATE DANGER

- If an emergency incident occurs, move a safe distance away from the danger.
- Prevent others from entering the area and alert surrounding people.
- If safe and trained to do so, attempt to extinguish the fire/contain the emergency incident.
- Continually assess the situation and do not put yourself or others at risk.

NOTIFY EMERGENCY SERVICES

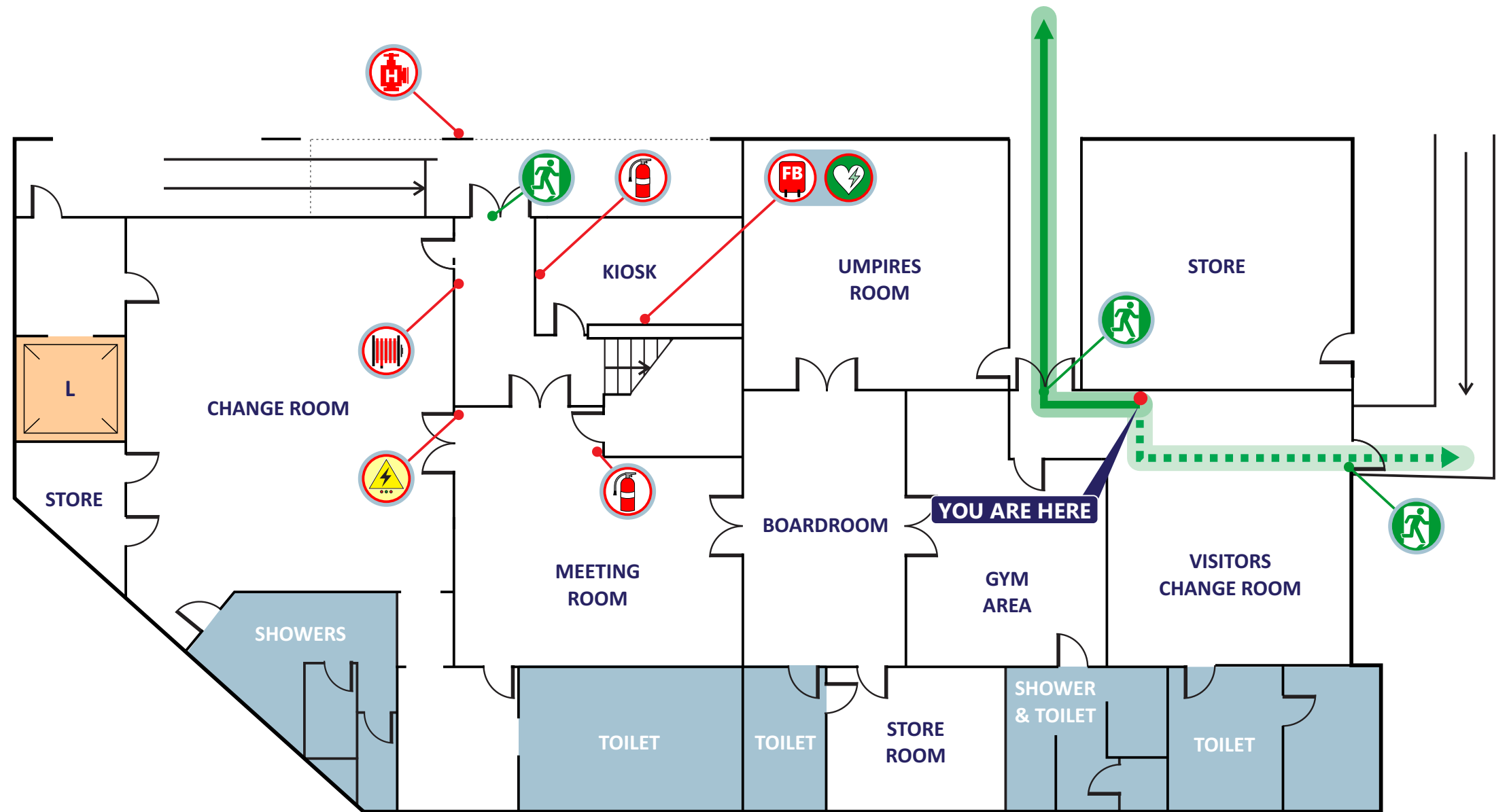
- Dial 000

EVACUATE THE BUILDING

- In the event of the smoke, fire or emergency incident worsening, EVACUATE immediately, via the nearest safe exit.
- When the area has been evacuated, all doors and windows should be closed to contain the smoke/fire. Do not obstruct access to Exits.

PROCEED TO THE ASSEMBLY AREA

- Refer to Site Plan and await instructions from the responding Emergency Services.



IN CASE OF FIRE
(ATTEMPT ONLY IF SAFE TO DO SO)

R REMOVE ANY PERSON/S FROM IMMEDIATE DANGER. STAY LOW	P PULL THE PIN, BREAK THE SEAL AND TEST
A ALERT RAISE THE ALARM. DIAL 000 FOR EMERGENCY SERVICES	A AIM AT THE BASE OF THE FIRE/FLAMES
C CONTAIN CLOSE DOORS & WINDOWS TO CONFINE SMOKE/FIRE	S SQUEEZE THE OPERATING HANDLE (TRIGGER)
E EXTINGUISH/EVACUATE ATTEMPT TO EXTINGUISH THE FIRE (REMEMBER PASS)	S SWEEP THE CONTENTS FROM SIDE-TO-SIDE

FOR FIRE EXTINGUISHERS, REMEMBER:

IF YOUR SAFETY IS AT RISK, EVACUATE

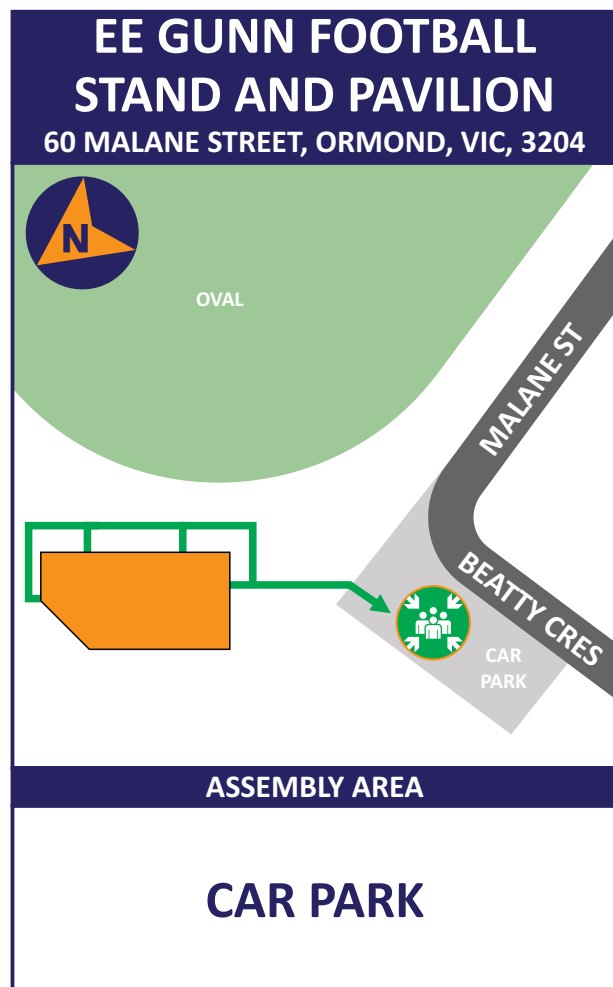
LEGEND

Fire Extinguisher Dry Chemical Powder	Fire Hose Reel	Fire Blanket
Hydrant	Switchboard	Defibrillator
Exit	Primary Evacuation Route	Secondary Evacuation Route

EMERGENCY SERVICES

POLICE	FIRE	AMBULANCE
DIAL 000	GROUND	

EVACUATION DIAGRAM



EVACUATION PROCEDURES

REMOVE FROM IMMEDIATE DANGER

- If an emergency incident occurs, move a safe distance away from the danger.
- Prevent others from entering the area and alert surrounding people.
- If safe and trained to do so, attempt to extinguish the fire/contain the emergency incident.
- Continually assess the situation and do not put yourself or others at risk.

NOTIFY EMERGENCY SERVICES

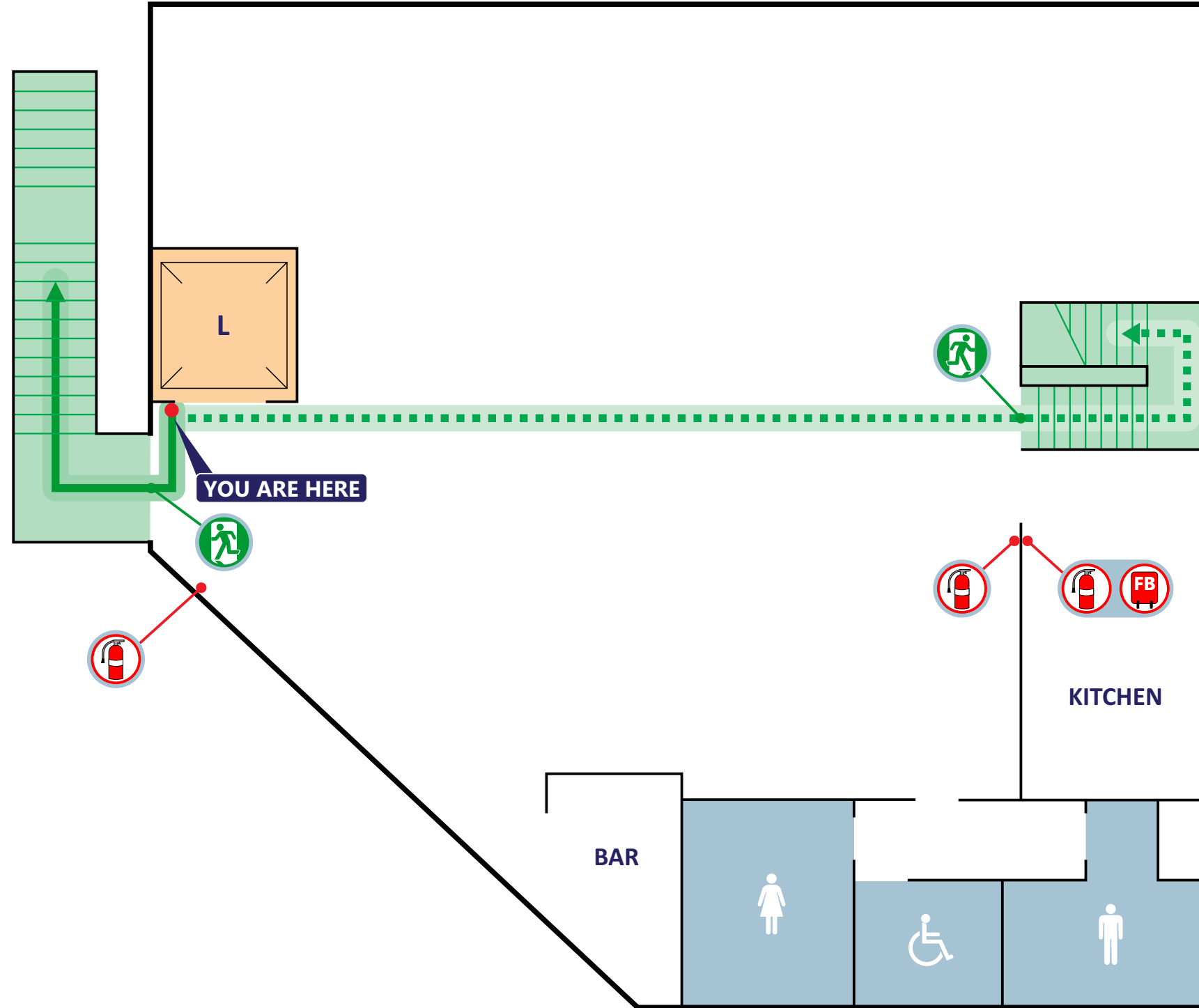
- Dial 000

EVACUATE THE BUILDING

- In the event of the smoke, fire or emergency incident worsening, EVACUATE immediately, via the nearest safe exit.
- When the area has been evacuated, all doors and windows should be closed to contain the smoke/fire. Do not obstruct access to Exits.

PROCEED TO THE ASSEMBLY AREA

- Refer to Site Plan and await instructions from the responding Emergency Services.



IN CASE OF FIRE
(ATTEMPT ONLY IF SAFE TO DO SO)

R REMOVE ANY PERSON/S FROM IMMEDIATE DANGER. STAY LOW	P PULL THE PIN, BREAK THE SEAL AND TEST
A ALERT RAISE THE ALARM. DIAL 000 FOR EMERGENCY SERVICES	A AIM AT THE BASE OF THE FIRE/FLAMES
C CONTAIN CLOSE DOORS & WINDOWS TO CONFINE SMOKE/FIRE	S SQUEEZE THE OPERATING HANDLE (TRIGGER)
E EXTINGUISH/EVACUATE ATTEMPT TO EXTINGUISH THE FIRE (REMEMBER PASS)	S SWEEP THE CONTENTS FROM SIDE-TO-SIDE

FOR FIRE EXTINGUISHERS, REMEMBER:

IF YOUR SAFETY IS AT RISK, EVACUATE

LEGEND

Fire Extinguisher Dry Chemical Powder	Fire Blanket	Exit
Primary Evacuation Route	Secondary Evacuation Route	

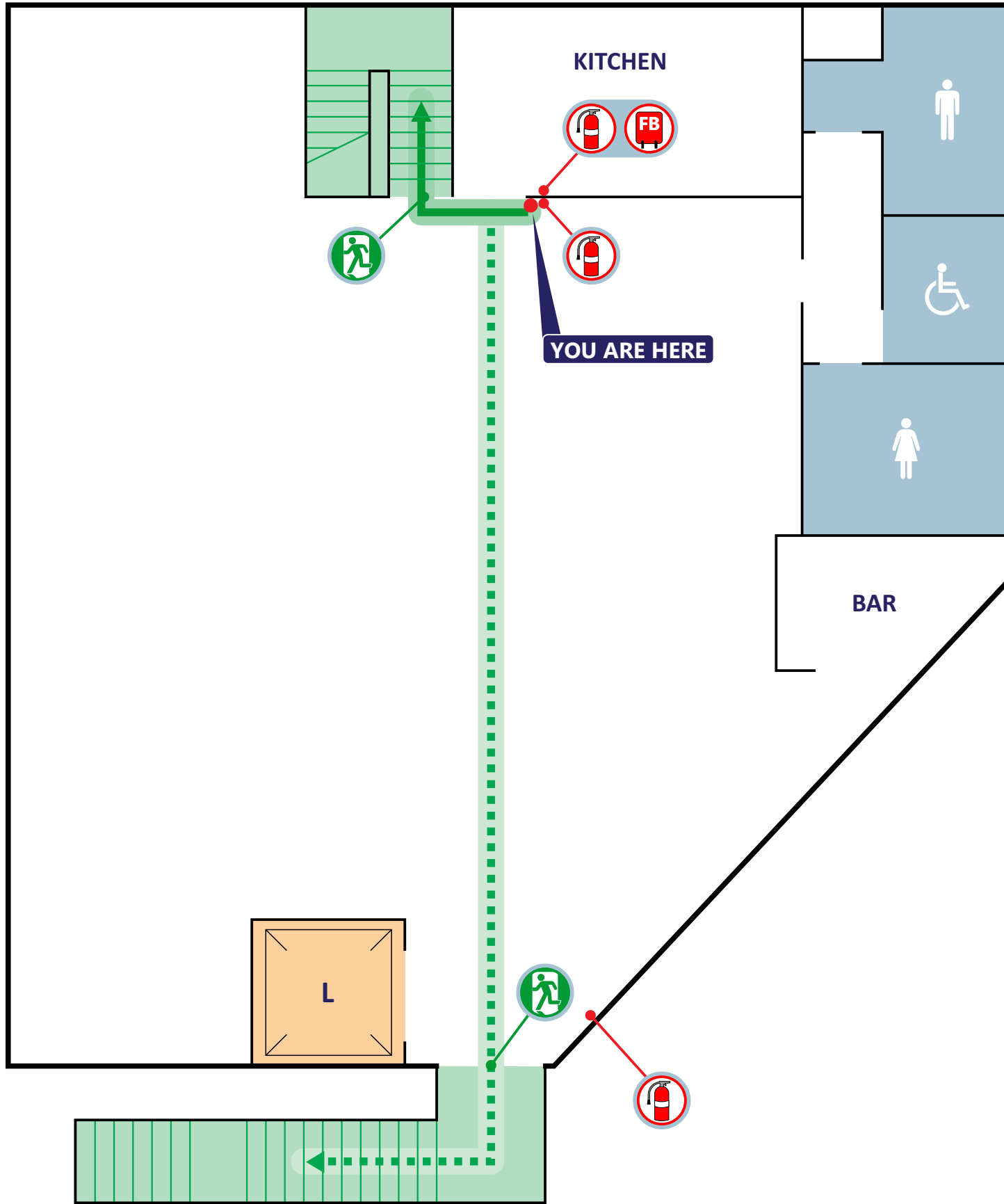
EMERGENCY SERVICES

POLICE FIRE AMBULANCE

DIAL 000

LEVEL 1

EVACUATION DIAGRAM



EE GUNN FOOTBALL STAND AND PAVILION
60 MALANE STREET, ORMOND, VIC, 3204

ASSEMBLY AREA

CAR PARK

EVACUATION PROCEDURES

REMOVE FROM IMMEDIATE DANGER

- If an emergency incident occurs, move a safe distance away from the danger.
- Prevent others from entering the area and alert surrounding people.
- If safe and trained to do so, attempt to extinguish the fire/contain the emergency incident.
- Continually assess the situation and do not put yourself or others at risk.

NOTIFY EMERGENCY SERVICES

- Dial 000

EVACUATE THE BUILDING

- In the event of the smoke, fire or emergency incident worsening, EVACUATE immediately, via the nearest safe exit.
- When the area has been evacuated, all doors and windows should be closed to contain the smoke/fire. Do not obstruct access to Exits.

PROCEED TO THE ASSEMBLY AREA

- Refer to Site Plan and await instructions from the responding Emergency Services.

IN CASE OF FIRE
(ATTEMPT ONLY IF SAFE TO DO SO)

R REMOVE
ANY PERSON/S FROM IMMEDIATE DANGER. STAY LOW

A ALERT
RAISE THE ALARM. DIAL 000 FOR EMERGENCY SERVICES

C CONTAIN
CLOSE DOORS & WINDOWS TO CONFINE SMOKE/FIRE

E EXTINGUISH/EVACUATE
ATTEMPT TO EXTINGUISH THE FIRE (REMEMBER PASS)

FOR FIRE EXTINGUISHERS, REMEMBER:

P PULL
THE PIN, BREAK THE SEAL AND TEST

A AIM
AT THE BASE OF THE FIRE/FLAMES

S SQUEEZE
THE OPERATING HANDLE (TRIGGER)

S SWEEP
THE CONTENTS FROM SIDE-TO-SIDE

IF YOUR SAFETY IS AT RISK, EVACUATE

EMERGENCY SERVICES

DIAL 000 POLICE FIRE AMBULANCE

LEGEND

- Fire Extinguisher Dry Chemical Powder
- Fire Blanket
- Exit
- Primary Evacuation Route
- Secondary Evacuation Route

LEVEL 1